



10-32 SHUTTLE VALVES

Shuttle Valves

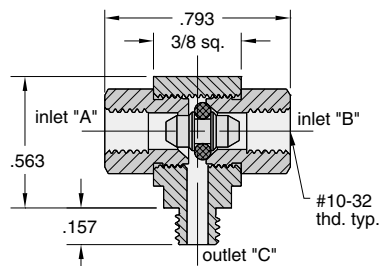
There are three models of shuttle valves offered by Clippard. These valves feature a shuttle that allows flow from one inlet to the outlet while blocking the other inlet. They may be mounted directly to valves and cylinders or inline using the hose barbs on the MSV models.

Poppet type shuttle (double check) valve. Brass body, and poppet, Buna-N seal

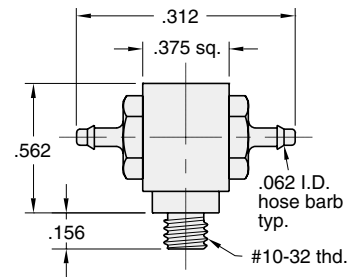


- Medium:** air, water, or oil
 - Input Pressure:** 250 psig max.
 - Air Flow:** @50 psig - 5.0 SCFM
@100 psig - 9.5 SCFM
 - Mounting:** Direct or inline
 - Ports:** Inlet - 10-32, Outlet - 10-32
 - Operation:** Flow from "A" to "C" or "B" to "C"
 - Pressure to Shift:** 1/2 psig approx.
 - Exhaust:** Through port where pressure was last applied
 - Temperature Range:** 32° to 230° F
- Note:** Shuttle valves should not be used as a pressure selector

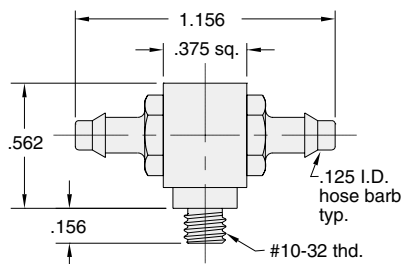
MSV-1



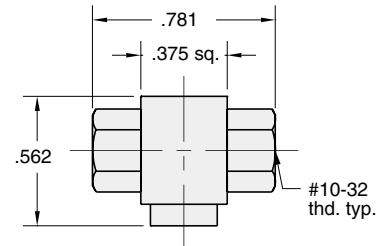
MSV-1M22



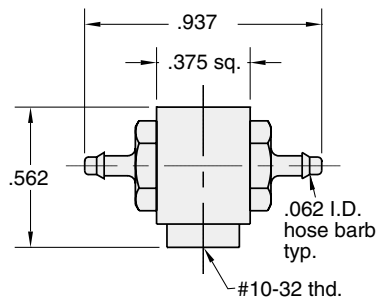
MSV-1M44



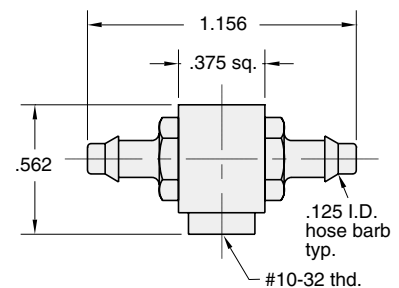
MSV-1FFF



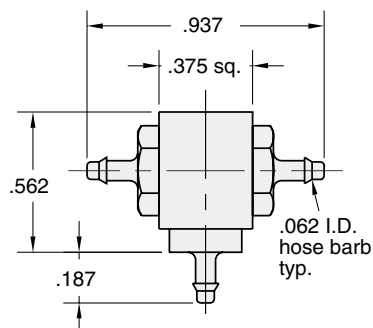
MSV-1F22



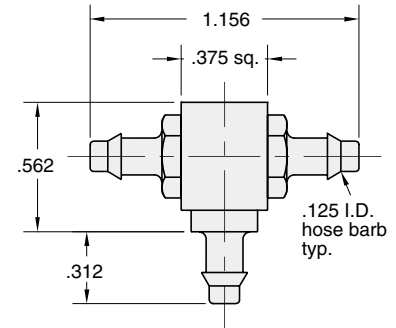
MSV-1F44



MSV-1222



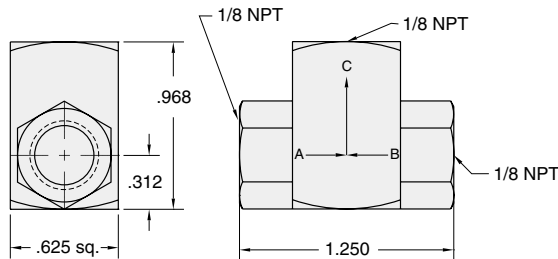
MSV-1444



MJSV-1

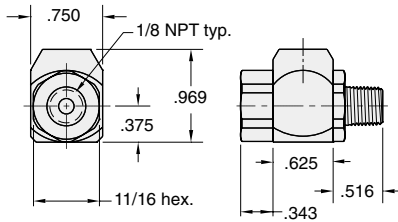


Poppet type shuttle valve. Brass body, Delrin poppet, Buna-N seal



Medium: air, water, or oil
Input Pressure: 300 - psig air
 1000 psig - hydraulic
Air Flow: @50 psig - 14 SCFM
 @100 psig - 26 SCFM
Mounting: Direct or inline
Ports: Inlet - 1/8 NPT, Outlet - 1/8 NPT
Operation: Flow from "A" to "C" or "B" to "C"
Pressure to Shift: 1/2 psig approx.
Temperature Range: 32° to 230° F
Note: Shuttle valves should not be used as a pressure selector

JSV-2FPF



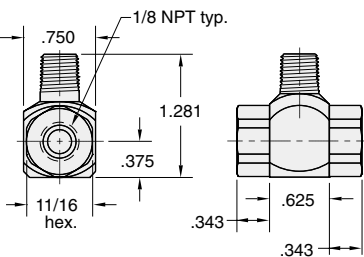
J-Series Shuttle Valve

Poppet type shuttle valve (double check) valve. Brass body, stainless steel shuttle, Buna-N seal

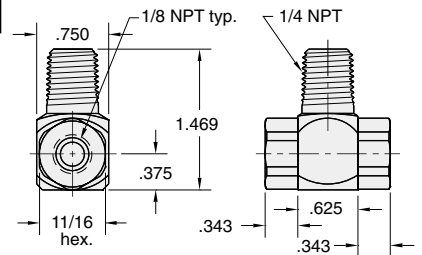


Medium: air, water, or oil
Input Pressure: 300 psig max.
Air Flow: @50 psig - 30 SCFM
 @100 psig - 50 SCFM
Mounting: Direct or inline
Ports: Inlet & Outlet - 1/8 or 1/4 NPT, male or female
Temperature Range: 32° to 230° F
Pressure to Shift: 1 psig approx.

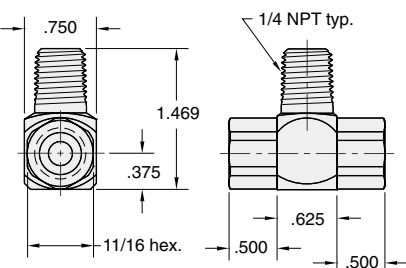
JSV-2PFF



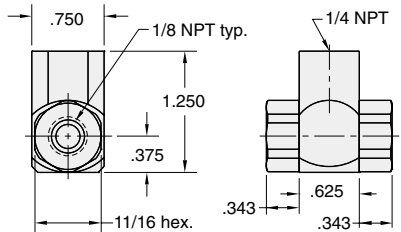
JSV-2WFF



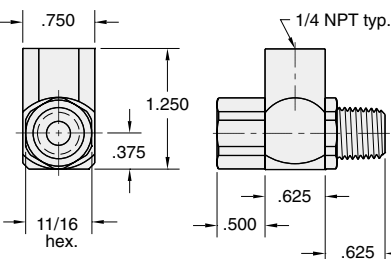
JSV-2WYY



JSV-2YFF



JSV-2YWY



JSV-2YYY

